

Telepresenter Management System

Java Edition

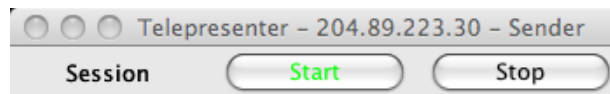
Control a Telepresenter or Presentation Recorder from your Desktop

This Tech Tip covers installation and usage of the Telepresenter Management System (TMS), Java Edition.

TMS is a Java based utility which allows remote control of a single Telepresenter or Presentation Recorder from a desktop PC, notebook or netbook using the serial command set over an IP network. There are several control layouts available:

Session Start/Stop Layout

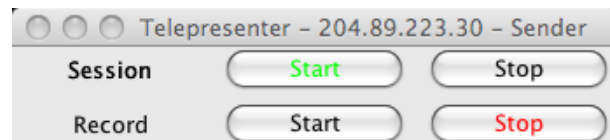
This is the simplest layout and allows Session start/stop commands to be executed.



The recorder being controlled is listed at the top along with its current status. The colors on the buttons indicate whether the unit is active or not. Although there are no recording buttons available, a Channel may be setup to provide for automatic startup of recording when a Session starts. When the Session stops, recording stops. There is a version of this layout with three text fields for entering Title, Presenter and Description metadata.

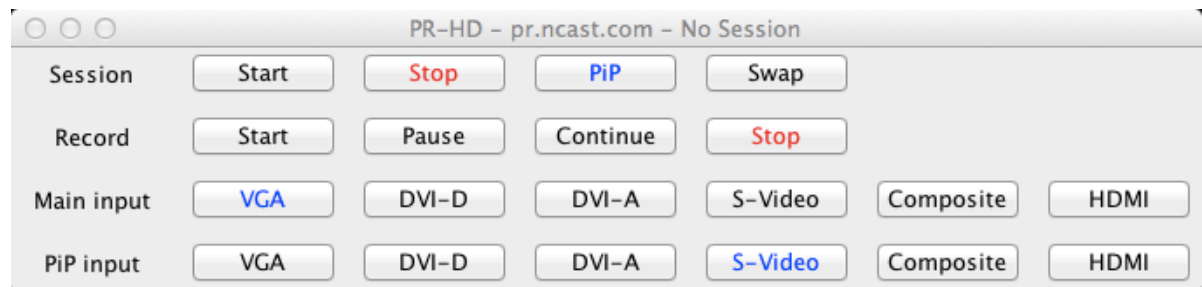
Record Layout – Session Start/Stop and Record Start/Stop

This layout adds separate Record start/stop buttons. There is a text version of this layout.



Mixer Layout – Session and Record Start/Stop with Source Selection

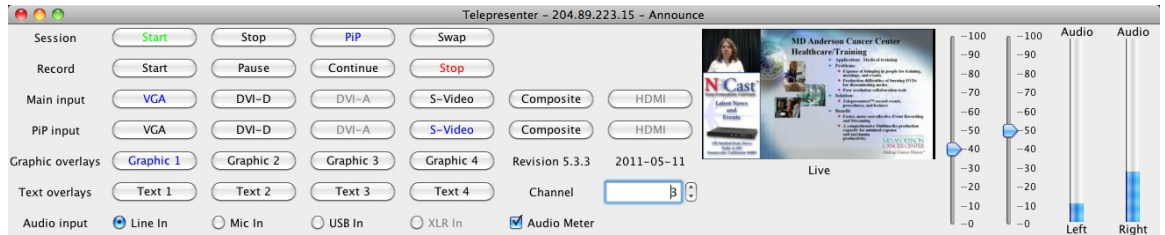
This layout adds controls for source selection.



Telepresenter Management System – Java Edition

Control Panel Layout – Full Control of the Recorder

This layout provides for controls of all runtime features on the Telepresenter or Presentation Recorder.



The Channel spinner specifies which channel to start. Audio sliders allow adjustment of input and output audio gains. Audio level meters report the current audio input levels every second. The audio input level may be forced to a given value at program startup. A thumbnail image shows the current screen composition and material being recorded.

Usage – Starting the Program

First, you must enable the Telnet port on the unit to be controlled. Go to the Telnet tab on the recorder's web page and set the "Enabled" option. Add the controlling IP address to the "IP Restriction" field and click "Update".

TMS is distributed as a Java .jar file along with two property files. Double-click on the TMS.jar file to launch the program and enter the IP address and Layout desired.

To initially start the program from a command line use this command:

```
java -jar TMS.jar myunit.ncast.edu
```

Once initialized the "tms.properties" file retains the address of the recorder being controlled.

Properties File

The fields in the properties file may be edited to change operation of the program:

```
#pr.ncast.com
#Thu Jun 04 09:10:36 PDT 2013
port=7474 // Telnet port in use
debug=false // true/false enables additional debug info
site=pr.ncast.com // Unit being controlled
password=ncast // Telnet password
quiet=true // Console messages true/false
log=false // Logging messages to tms.log (true/false)
Channel=1 // Channel to control
Audio=40 // Audio level to set (-1 = Don't change)
layout=Mixer // Layout to display
```

Current Layouts

SessionStartStop, SessionStartStopText, Record, RecordText, Mixer, ControlPanel, ChannelSelector

Support

For questions or help in resolving any problems email "support@ncast.com" or better yet, create a support ticket on our website. Downloading and attaching the .zip files of the logs from each unit will be most helpful to tech support in resolving any issues.