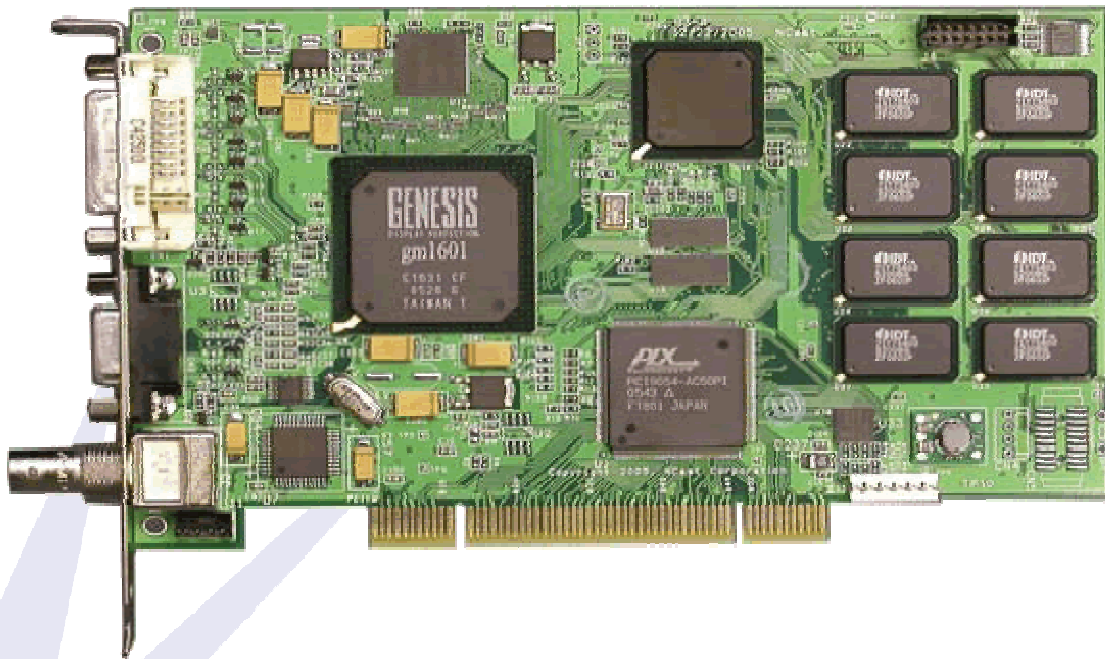


Digitizer 3.1 Capture Card



Overview

The Digitizer 3.1 Card is a digital frame grabber/capture card that captures frames from analog and digital sources and delivers them to applications via the PCI bus. The Digitizer 3.1 card offers up to WUXGA capture resolution, an excellent frame-capture rate, and Picture in Picture (PiP) capability. The card is ideal for remote viewing applications, replacing dedicated monitors, and developing “multimedia capture” tools and products. The plug-in card is designed to work with both Linux and Windows PC desktops.

Applications

- ✓ Stream and archive a prepared presentation easily to PC users with Windows Media Encoder or your favorite Linux application.
- ✓ View multiple feeds on your Windows desktop.
- ✓ Send RGB/DVI or video over IP.

FEATURE HIGHLIGHTS

- **Captures up to WUXGA (1920 x 1200) graphics and 1080p (HD) Video**
- **RGB, DVI-D, Composite, and S-Video input connectors**
- **DVI and RGB input with EDID support for flawless VGA/DVI Detection**
- **Simultaneous capture of TWO fully-synchronized input signals**
- **Flexible PiP capability for video-in-graphics or graphics-in video**
- **On board processor to detect input signals, compose input streams, and manage dual frame buffers**
- **Up to 60 fps SXGA**
- **Stream/record over IP using Windows Media Encoder, Real Producer or other applications**
- **Linux support**

Technical Specifications:

GRAPHIC INPUTS

RGB on DB15, DVI-D
Inputs up to 1920x1200

VIDEO INPUTS

S-Video, Composite

SUPPORTED STANDARD VIDEO INPUT MODES

Video	Resolution	Frequency
NTSC- 480i	720x480	60Hz
PAL- 576i	720x576	50Hz
Progressive- 480p	720x480	60Hz
Progressive- 576p	720x576	50Hz
HDTV- 720p	1280x720	50, 60Hz
HDTV- 1080p	1920x1080	50, 60Hz

SUPPORTED STANDARD GRAPHICS INPUT MODES

Resolution	Resolution	Frequency
VGA	640x350	70, 85Hz
VGA	640x400	56, 70, 85Hz
VGA	640x480	60, 66, 67, 72, 75, 85Hz
VGA	640x480	60, 72, 70, 75, 85Hz
SVGA	720x350	70Hz
SVGA	720x400	70, 85Hz
SVGA	800x600	56, 60, 72, 75, 85Hz
SVGA	832x624	75Hz
XGA	1024x768	60, 70, 75, 85Hz
XGA	1152x864	70, 75Hz
XGA	1152x870	75Hz
XGA	1152x900	66, 76Hz
SXGA	1280x960	60, 85Hz
SXGA	1280x1024	60, 67, 70, 72, 75, 76, 85Hz
UXGA	1600x1200	60, 75Hz
WUXGA	1920x1200	60Hz

CAPTURE PERFORMANCE

(THE SPEED AT WHICH THE CARD DELIVERS FRAMES TO THE PCI BUS)

Resolution	YUV	RGB
1024x768 and below	60 fps	30 fps
1280x1024	56 fps	28 fps
1600x1200	36 fps	18 fps
1920x1200	30/24 fps	15 fps

COLOR SPACE MODELS

RGB 8-8-8 format
YUV 4-2-0 format

VIDEO AND GRAPHICS INPUT CONTROLS

Graphics positioning (vertical slant, horizontal start)
Acquisition mode

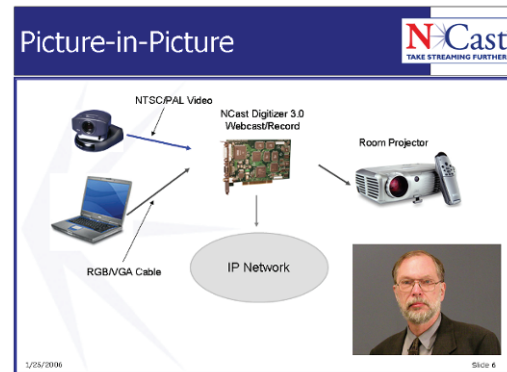
SUPPORTED INTERFACES (BUSES)

PCI 33Mhz, 32Bit BUS

MAX PIXEL RATE

165 MHz

PICTURE-IN-PICTURE SUPPORT



SOFTWARE

Software development kit for custom applications
 ✓ N-Cast Screen capture software application
 ✓ N-Cast Control Program for settings

OPERATING SYSTEMS/DRIVERS

Linux – 2.4 and 2.6 kernel support
Current ver. 1.1.0 (3/2007)

Windows – 2000/XP support
Current ver.1.1.3 (3/2007)

DIMENSIONS

Standard PCI Bus card interface

POWER CONSUMPTION

Input RGB analog 1600x1200 (capture set to 18fps)
 3.3V @ 1.20A = 3.96W
 5V @ 0.55A = 2.75W
 Total= 6.71W typical

ENVIRONMENTAL

0 to 35 deg. C
5% to 90% non-condensing
RoHS Compliant
FCC Class B

