

Telepresenter Management System

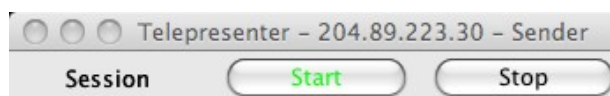
Java Edition Beta Release August 14th, 2009

This Tech Tip covers installation and usage of the Telepresenter Management System (TMS), Java Edition.

TMS is a Java based utility which allows remote control of a single Telepresenter from a desktop PC, notebook or netbook using the serial command set over an IP network. There are several control layouts available:

Session Start/Stop Layout

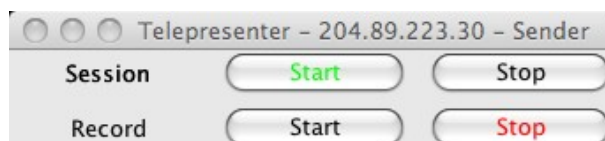
This is the simplest layout and allows Session start/stop commands to be executed.



The Telepresenter being controlled is listed at the top along with its current status. The colors on the buttons indicate whether the unit is active or not. Although there are no recording buttons available, a Channel may be setup to provide for automatic startup of recording when a Session starts. When the Session stops, recording stops.

Record Layout – Session Start/Stop and Record Start/Stop

This layout adds separate Record start/stop buttons.



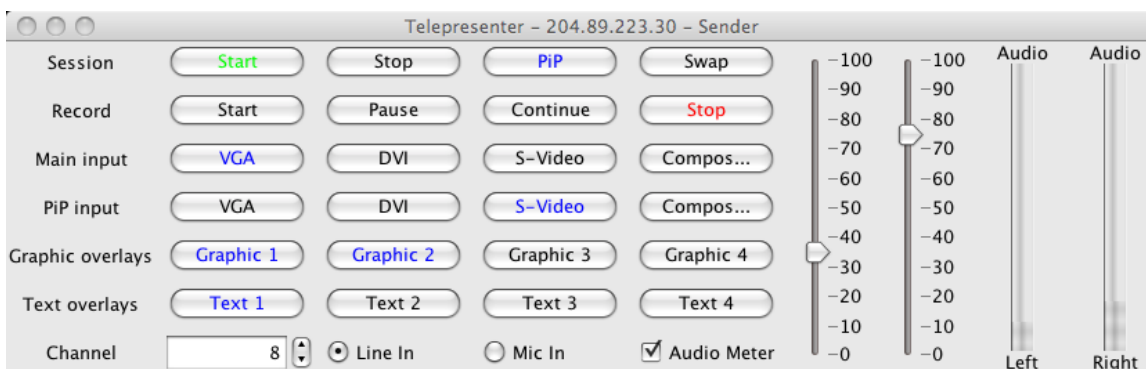
Mixer Layout – Session and Record Start/Stop with Source Selection

This layout adds controls for source selection.



Control Panel Layout – Full Control of the Telepresenter

This layout provides for controls of all runtime features on the Telepresenter:



The Channel spinner specifies which channel to start. Audio sliders allow adjustment of input and output audio gains. Audio level meters report the current audio input levels every second. The audio input level may be forced to a given value at program startup.

Usage – Starting the Program

First, you must enable the Telnet port on the Telepresenter to be controlled. Go to the Telnet tab on the Telepresenter's web page and set the "Enabled" option. Add the controlling IP address to the "IP Restriction" field and click "Update".

TMS is distributed as a Java .jar file along with two property files. To initially start the program use this command:

```
java -jar TMS.jar telepresenter.somewhere.edu
```

Once initialized the properties file retains the address of the Telepresenter being controlled.

Properties File

The fields in the properties file can be edited to change operation of the program:

```
#telepresenter.ncast.com
#Thu Jun 04 09:10:36 PDT 2009
port=7474                // Telnet port in use
debug=false              // true/false enables additional debug info
site=telepresenter.ncast.com // Unit being controlled
password=ncast           // Telnet password
quiet=true               // Console messages true/false
log=false                // Logging messages to tms.log (true/false)
channel=1                // Channel to control
audio=40                 // Audio level to set (-1 = Don't change)
layout=Mixer             // Layout to display
```

Current layouts available:

SessionStartStop, Record, Mixer, ControlPanel, ChannelSelector